



CLIVEPEARCE
Now you're moving

3 Bedrooms

House - End Terrace

Asking Price

£210,000

Located in

Truro



www.clivepearceproperty.com



3 Poplar Cottages

Truro | | TR3 7JA



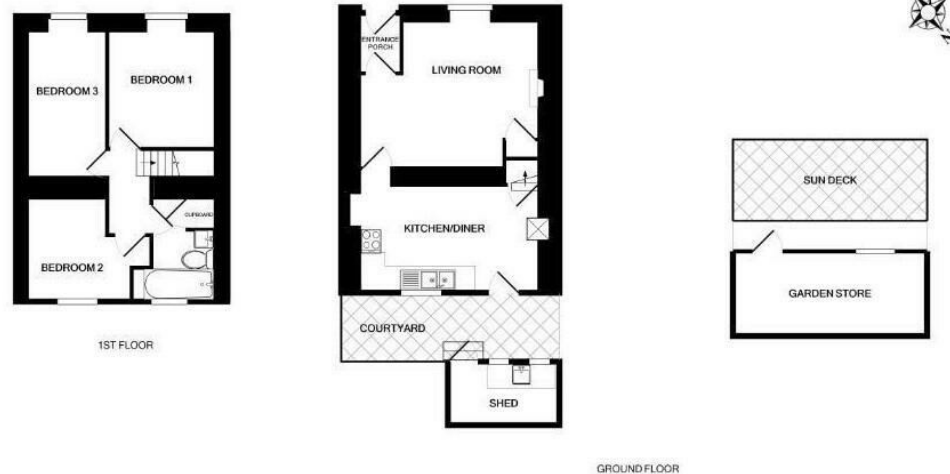
A delightful and spacious three bedroom end of terrace character cottage with cosy beamed ceilings to the ground floor, spacious bedrooms and a first floor bathroom, large garden with block built out building and single allocated parking conveniently located on the main road just outside Ponsanooth village.

3 Poplar Cottages

£210,000 Freehold



- Three bedrooms
- Beamed Ceilings
- Fireplace
- Single parking space
- Adjacent to main A393 road
- Character cottage
- Dimplex Quantum night store heating
- Large garden
- Located near Ponsanooth village



ROSELEIGH 3 POPLAR COTTAGES PONSANNOOTH TR3 7JA
TOTAL APPROX. FLOOR AREA 74.9 SQ.M. (806 SQ.FT.)

Council Tax Band B

Local Authority

Agents Note: Whilst every care has been taken to prepare these particulars, they are for guidance purposes only. All measurements are approximate and are for general guidance purposes only and whilst every care has been taken to ensure their accuracy, they should not be relied upon and potential buyers/tenants are advised to recheck the measurements.

Energy Efficiency Rating		
	Current	Potential
Very energy efficient - lower running costs		
(92 plus) A		
(81-91) B		90
(69-80) C		
(55-68) D	58	
(39-54) E		
(21-38) F		
(1-20) G		
Not energy efficient - higher running costs		
England & Wales	EU Directive 2002/91/EC	

31 Lemon Street
Truro
Cornwall
TR1 2LS



CLIVEPEARCE
Now you're moving

hello@clivepearceproperty.com

01872 272622

www.clivepearceproperty.com